



Order no.: 041306

Step shelf ladder, hook-in



Number of steps

- 6
- 8
- 10
- 12
- 14
- 16
- 18

Specification

Working height 2.8 m	Step design Steps	Number of steps/rungs 6 steps	Step width 370 mm	Step depth 80 mm
Step/Rung distance 235 mm	Vertical hook-in height 1.58 m	Ladder length 1.69 m	Base area 580 mm	Inclination 70 °
Outer width 420 mm	Max. load capacity 150 kg	Design type To hang up	Transport dimensions 1690 x 425 x 123 mm, 4.5 kg	Business division MUNK Günzburger Steigtechnik
Order no. 041306				

Facts

- Step shelf ladder made of aluminium
- Stable rectangular tube side-rails
- Grooved steps with a depth of 80 mm
- 4-fold edged step-to-side-rail connection
- Non-slip ladder shoes

- Sturdy lay-on hooks Ø 35 mm at the upper end for safe standing
- Storage hook, Ø 35 mm, for compactly storing when not in use
- Step spacing: 235 mm
- Ladder width: 420 mm
- Ladder inclination: 70°
- Maximum load: 150 kg
- Note: Shelf ladders are manufactured in standard lengths stated here as well as individually made to measure. Please indicate the exact vertical hook-in height – the price includes the next higher ladder and a flat rate for changes of 51.00 euros RRP excluding VAT. Shelf ladders made to size are non-returnable

### Scope of supply

- Ladder: 1 x
- Instructions for use and operation: 1 x

### Information on sustainability criteria

- Corporate certification: ISO 9001
- Corporate certification: ISO 14001
- Corporate certification: EN 1090
- Corporate certification: EcoVadis
- RoHS
- REACH
- The MUNK Group complies with a Code of Conduct
- The Supply Chain Act does not apply due to our size
- The materials used are listed in the technical specification
- Resource-saving production: own photovoltaic systems
- Energy-efficient consumption during production: LED lighting
- Repairability, durability and quality: 15-year warranty on series products made in Germany

- Recyclability: Our products are mostly made of aluminium, steel or wood and can be fed directly into the recycling process.
- Socially acceptable working conditions in production: fair wages, gender equality
- Economical and recyclable packaging: no use of polystyrene, predominantly use of wood and cardboard, small amounts of plastic
- No health hazards for the users

## More product pictures

---



## Added value

---

### Industrial grade

Stable and robust for tough everyday working life (including 4-way edging)

- Corrosion-resistant fixtures
- Use of high-quality and high-strength materials
- Versatile and practical accessories



### Rail system

- Made-to-measure production of the rail system
- Easy assembly of all components



### Versatile solutions

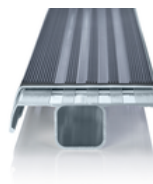
- Ladders available in standard lengths or individual dimensions
- Available with and without roll-top as well as a rotatable version
- Optional spring-loaded castors
- For single and double-sided shelves



### clip-step step padding

Optimised and certified non-slip protection for greater comfort and safety

- Made of grooved plastic
- Exact fit and easy to clip onto the steps
- Applied up to the maximum accessible step as a visual check
- Retrofittable and available as spare part



## clip-step R 13 step padding

Certified non-slip protection for step ladders

- Fulfills the requirements of the highest possible non-slip class R 13 thanks to aluminium oxide particles
- Improves work safety in wet and oil-contaminated environments
- Applied up to the maximum accessible step as a visual check
- Retrofittable, available as a spare part and also in yellow in selected lengths (RAL 1021)



## Certificates



## Corporate certifications

on sustainability criteria



Management  
System  
ISO 9001:2015  
ISO 14001:2015  
  
[www.tuv.com](http://www.tuv.com)  
ID 9108612548



**Nachhaltigkeit**

**EcoVadis**  
sustainable supply management

CSR-Rating in Silber 2022