



Order no.: 041623

## Single-sided stepladder with clip-step R13



Number of steps

- 3
- 4
- 5
- 6
- 7
- 8
- 9
- 10
- 12
- 14

### Specification

|                              |  |  |  |                              |
|------------------------------|--|--|--|------------------------------|
| Working height<br>2.7 m      | Step design<br>Steps                                 | Number of steps/rungs<br>3 steps                         | Platform included as<br>step<br>Yes                  | Step depth<br>80 mm          |
| Step/Rung distance<br>235 mm | Type of non-slip<br>protection<br>clip-step R13      | Height<br>1.34 m   | Platform height<br>670 mm                            | Base spread<br>700 mm        |
| Inclination<br>70 °          | Lower outer width<br>470 mm                          | Depth of side-rails<br>73 mm                             | Depth of side-rails,<br>support<br>58 mm             | Width of side-rails<br>25 mm |
| Max. load capacity<br>150 kg | Design type<br>Freestanding  <br>Single-sided access | Transport dimensions<br>1434 x 461 x 164<br>mm, 5.751 kg | Business division<br>MUNK Günzburger<br>Steigtechnik | Order no.<br>041623          |

### Facts

- Stepladder made of aluminium
- Stable rectangular tube side-rails
- 80 mm deep grooved steps and large platform
- 4-fold edged step-to-side-rail connection
- 'safe-cap' ladder joint
- Conical side-rail guide for safe stance

- ergo-pad® grip area with clamping mechanism
- nivello® ladder shoes with patented 2-axis inclination technology
- clip-step R13 step padding for certified non-slip protection
- Practical storage tray with integrated hooks and tool holders
- Spreader lock with two high-strength polyester straps
- Step spacing: 235 mm
- Ladder inclination: 70°
- Maximum load: 150 kg

### Scope of supply

- Ladder: 1 x

### Information on sustainability criteria

---

- Corporate certification: ISO 9001
- Corporate certification: ISO 14001
- Corporate certification: EN 1090
- Corporate certification: EcoVadis
- RoHS
- REACH
- The MUNK Group complies with a Code of Conduct
- The Supply Chain Act does not apply due to our size
- The materials used are listed in the technical specification
- Resource-saving production: own photovoltaic systems
- Energy-efficient consumption during production: LED lighting
- Repairability, durability and quality: 15-year warranty on series products made in Germany
- Recyclability: Our products are mostly made of aluminium, steel or wood and can be fed directly into the recycling process.
- Socially acceptable working conditions in production: fair wages, gender equality

- Economical and recyclable packaging: no use of polystyrene, predominantly use of wood and cardboard, small amounts of plastic
- No health hazards for the users

More product pictures

---



## Added value

---

### Industrial grade

Stable and robust for tough everyday working life (including 4-way edging)

- Corrosion-resistant fixtures
- Use of high-quality and high-strength materials
- Versatile and practical accessories



### Ladder joint safe-cap

- Smooth ladder joint with large contact surface and sturdy plastic protective cap
- The 6 rivets and thicker wall thickness provide for greater stability and protection at this sensitive point on the ladder, increasing its service life
- The safe-cap protects the ladder when in use, when loading and storing, as well as the contact surfaces, walls, truck loading areas and the joint itself



### Storage tray

- For the practical storage of small parts
- Made from high-quality plastic
- Partly with integrated hooks and tool holders
- Different versions, depending on the ladder model



The movable ladder shoe sets new standards in stability

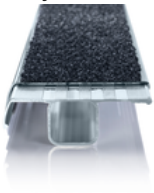
[Learn more](#)



### clip-step R 13 step padding

Certified non-slip protection for step ladders

- Fulfils the requirements of the highest possible non-slip class R 13 thanks to aluminium oxide particles
- Improves work safety in wet and oil-contaminated environments
- Applied up to the maximum accessible step as a visual check
- Retrofittable, available as a spare part and also in yellow in selected lengths (RAL 1021)



### Note: Working heights

- National regulations (e.g. TRBS 2121 Part 2 in Germany) must be complied with with regard to the maximum working height when using the ladder as a workstation.
- Information on [TRBS 2121 Part 2](#) has been summarised on our Service page
- Read our [tips and tricks](#) on how to calculate [working height](#)



### ergo-pad® grip area

For easier and more ergonomic handling at the optimum carrying point



## Certificates

---



25KFP0048-01 -  
Test Certificate  
"Bauart geprüft"

Valid in



DIN EN 131-3:2018  
EK5/AK1 17-  
02.4:2021  
DIN EN 131-1:2019  
DIN EN 131-2:2017  
PAK-  
ANFORDERUNG  
FÜR GS (PAH  
REQUIREMENT  
FOR GS) AFPS GS  
2019:01 PAK

## Corporate certifications

---

on sustainability criteria



Management System  
ISO 9001:2015  
ISO 14001:2015  
[www.tuv.com](http://www.tuv.com)  
ID 9108612548

