

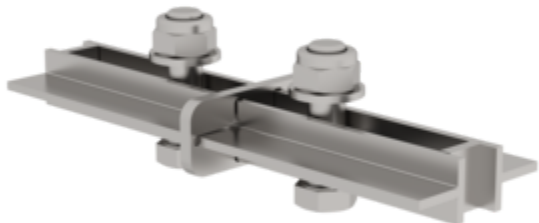
Order no.: 068236

Vertical ladder connector 200 mm

Material

Cast aluminium

Stainless steel



Specification

Length 200 mm	Material Stainless steel	Weight 0.54 kg	Transport dimensions 190 x 60 x 40 mm, 0.54 kg	Business division MUNK Günzburger Steigtechnik
Order no. 068236	Price € 51.00	Spare part for article no. 530120	Spare part for article no. 530100	Spare part for article no. 530105
Spare part for article no. 530110	Spare part for article no. 530115	Spare part for article no. 530125		

Facts

- Vertical ladder connector on the inside for connecting the vertical ladders
- Two pieces are needed per connection point of the ladder
- For simple and safe connection of vertical ladders
- Connecting elements for maximum stability

Scope of supply

- Ladder connection: 1 x
- Assembly instructions: 1 x
- Installation material: 1 x

Information on sustainability criteria

- Corporate certification: ISO 9001
- Corporate certification: ISO 14001
- Corporate certification: EN 1090
- Corporate certification: EcoVadis
- RoHS
- REACH
- The MUNK Group complies with a Code of Conduct
- The Supply Chain Act does not apply due to our size
- The materials used are listed in the technical specification
- Resource-saving production: own photovoltaic systems
- Energy-efficient consumption during production: LED lighting
- Repairability, durability and quality: 15-year warranty on series products made in Germany
- Recyclability: Our products are mostly made of aluminium, steel or wood and can be fed directly into the recycling process.
- Socially acceptable working conditions in production: fair wages, gender equality
- Economical and recyclable packaging: no use of polystyrene, predominantly use of wood and cardboard, small amounts of plastic
- No health hazards for the users

More product pictures

Added value

Optimum planning

- Practical planning aids (available as [Downloads](#)) with tips for correct planning of vertical ladder systems
- Planning in close coordination with the client as well as the place and purpose of use
- Joint project planning



All [fixed ladders / vertical ladders](#) at a glance:

- [Single-flight vertical ladders](#) in accordance with DIN 18799-1/-3, DIN 14094-1 and DIN EN ISO 14122-4 (depending on the choice of standard and the situation on site at the exit, additional components such as exit steps, railings and safety doors may be required)
- DIN 18799-1: Stationary multiple-flight vertical ladders [on buildings](#)
- DIN 14094-1: Multiple-flight [emergency ladder systems \(emergency ladders\)](#)
- DIN EN ISO 14122-4: Stationary multiple-flight vertical ladders [on machinery](#)

Corporate certifications

on sustainability criteria

